

PART R.L. 2

METRIC

PART R.L. 1



PLAN OF SUBDIVISION

OF PART OF
RIVER LOT 1,
PARISH OF HEADINGLEY

R.M. of HEADINGLEY

MANITOBA

SCALE 1 : 1000



NOTES
ALL DIMENSIONS ARE IN METERS AND MAY BE CONVERTED TO FEET BY MULTIPLYING BY 3.28084
SURVEY MONUMENTS FOUND ON THE GROUND ARE DESCRIBED AND SHOWN THAT.....
IRON PEGS 0.025 x 0.025 x 0.214 MARKED "S.L.S." WERE PLACED AT ALL POINTS SHOWN THAT.....
LAND AFFECTED BY THE RESUBDIVISION OF THIS PLAN IS SHOWN BORDERED THERE.....
ALL PLANS REFERRED TO ARE ON RECORD IN THE MANITOBA LAND TILES OFFICE.

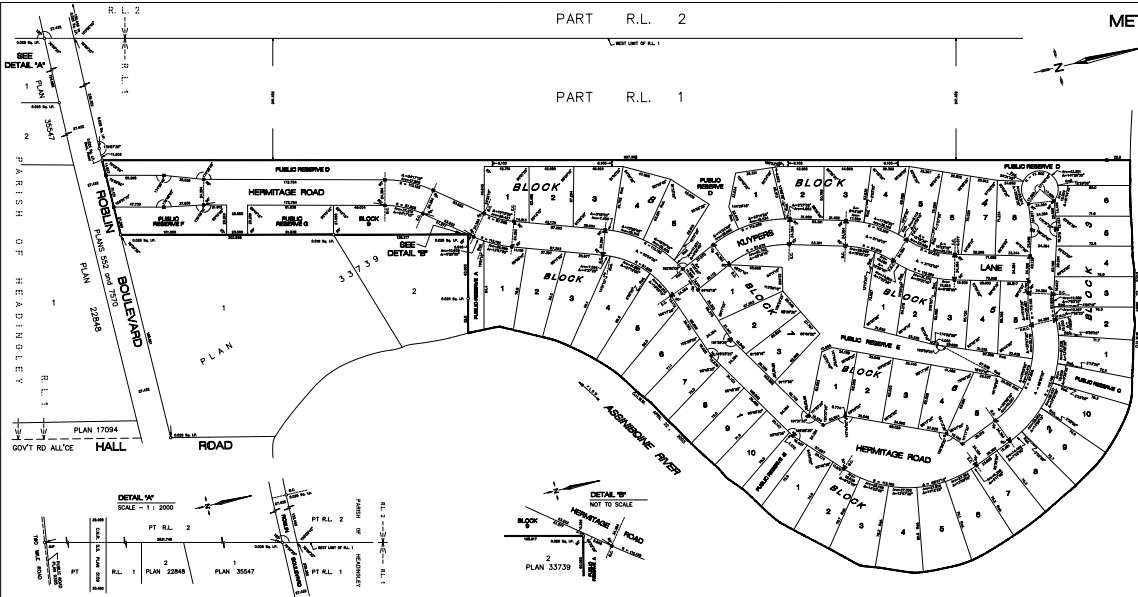
AFFIDAVIT
I, DONALD FREDERICK SPADIS, OF THE CITY OF WINNIPEG, MANITOBA LAND SURVEYOR, MAKE OATH AND SAY THAT I DO PERSONALLY SUPERVISE THE SURVEY REPRESENTED BY THIS PLAN, THAT THE SURVEY WAS MADE BETWEEN THE DATES OF APRIL 24, 2003 AND AUGUST 11, 2003 AND THAT THE SURVEY AND PLAN ARE CORRECT AND TRUE TO THE BEST OF MY KNOWLEDGE AND BELIEF.

SHOWN TO BEFORE ME AT THE CITY OF WINNIPEG
THIS _____ DAY OF _____, 20____

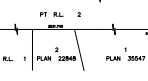
A SURVEYOR AUTHORIZED TO PRACTICE UNDER THE LAND SURVEYORS ACT

APPROVALS
APPROVED BY PLANNING COMMISSION
OF APPROVAL No. _____
THIS _____ DAY OF _____, 20____
FOR THE APPROVING AUTHORITY
FOR REGIONAL GENERAL
RE-APPROVED THIS _____ DAY OF _____, 20____
FOR REGIONAL GENERAL

DRAWN AND REGISTERED IN THE
MANITOBA LAND TILES OFFICE
THIS _____ DAY OF _____, 20____
AS PLAN No. _____
FOR SURVEY REGISTRATION
REGISTRATION No. _____
THE APPROVAL IS VALID FOR 12 MONTHS UNLESS REGISTERED.
APPROVED THIS _____ DAY OF _____, 20____
CHIEF OF SURVEY
RE-APPROVED THIS _____ DAY OF _____, 20____
CHIEF OF SURVEY



DETAIL 'A'
SCALE - 1 : 2000



DETAIL 'B'
NOT TO SCALE



SEE
DETAIL 'A'

SEE
DETAIL 'B'

